

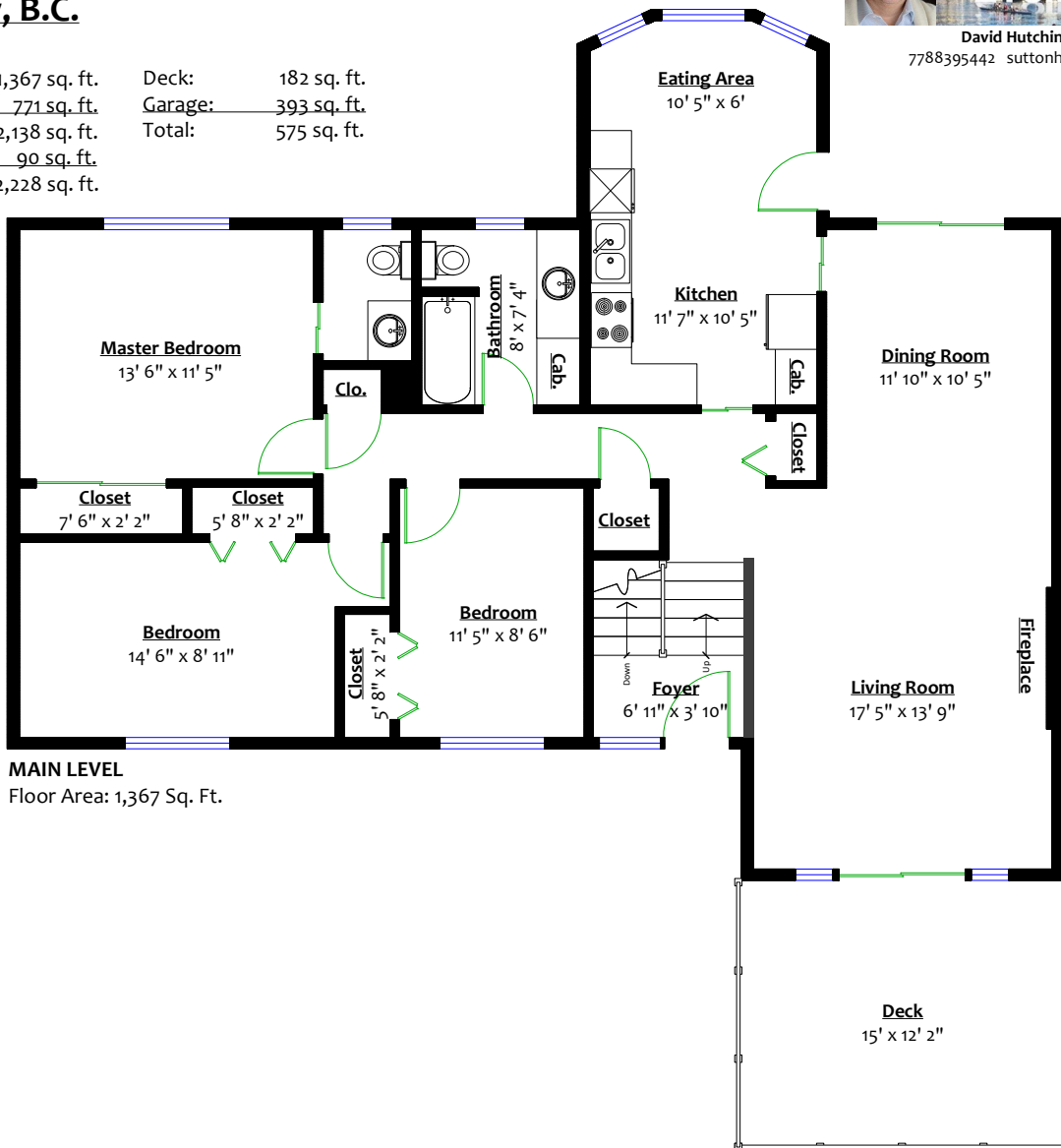
3341 Viewmount Drive, Port Moody, B.C.



David Hutchinson PREC*
7788395442 suttonhutch@yahoo.com

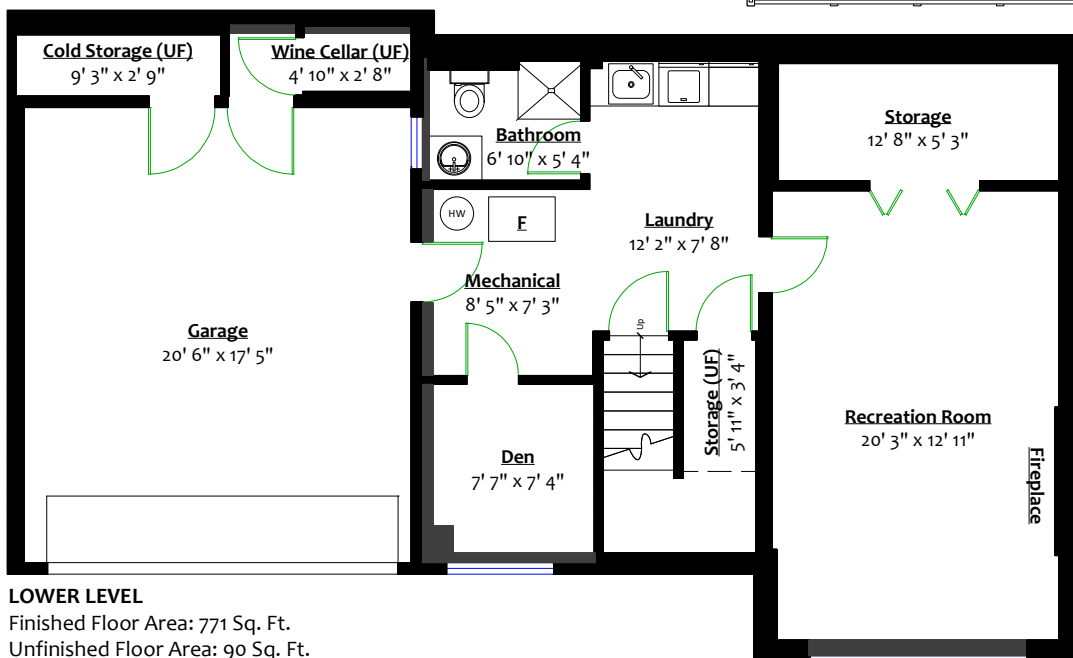
Totals**

Main Level:	1,367 sq. ft.	Deck:	182 sq. ft.
Lower Level:	771 sq. ft.	Garage:	393 sq. ft.
Total:	2,138 sq. ft.	Total:	575 sq. ft.
Lower Level (UF):	90 sq. ft.		
Grand Total:	2,228 sq. ft.		



MAIN LEVEL

Floor Area: 1,367 Sq. Ft.



LOWER LEVEL

Finished Floor Area: 771 Sq. Ft.
Unfinished Floor Area: 90 Sq. Ft.